

2024 - 25

Portfolio

A circular logo with the words "CREATIVE DESIGNER" in a sans-serif font, arranged in a circle around a central green circle.

↗ Logofolio

↗ Branding

↗ Social Media



Scan to
view CV

Hey!

My name is **Shaikh Noushin** and I'm a Graphic Designer. I'm specially working with brands to make Logos, Brand identity and Visual branding.

Experience:

Fresher.

Softwares:



Coreldraw



Photoshop



Illustrator



Indesign

Education:

S.S.C: GSEB

H.S.C: GSEB

B.com in Accounting (Hons)
Gujarat University (2023-27)

Creative Field:

- Logo & Branding
- Business Card
- Brochure / Flyer
- Presentation
- Communication
- Problem Solving

Index

01. Logofolio

02. Social Media Post

03. Branding

Logofolio

1.



ELLEÉ

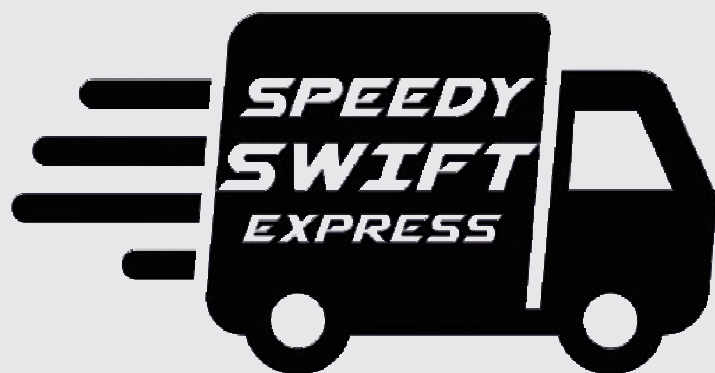
"Pure Elegance in every drop!"

2.



"Brewing brilliance, a cup at a time."

3.



"Your packages , our priorities - Safe and Secure"

4.



Social Media Post



Elleè is a skincare brand that made from Dermatologist-developed, science-backed skin care which provides you Simple, high-potency formulations at affordable prices. Our brand provides you with Broad range of skincare solutions from daily cleansers to specialized treatments. Key ingredients used for making various products are : Ceramides, hyaluronic acid, niacinamide , retinoids, peptides, acids (like glycolic and salicylic acid),etc.

**100%
Natural**



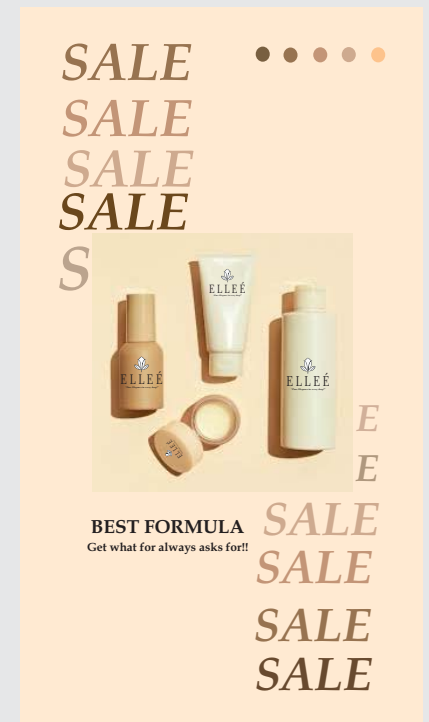
**ORGANIC
PRODUCT**



VETIVER & VANILLA
www.ellee.com



Elleè is newly launch skincare brand, their products are proudly available in across more than 10+ countries worldwide, bringing their high-quality solutions to customers across the globe. Our client had demanded for unique name branding which reflects their authenticity & genuine customers' concerns. I have provided them with our exceptional fonts, texts & color combination. Our client is overwhelmed with our services.





"Brewing brilliance, a cup at a time."

Nespresso Café is an inviting haven for coffee enthusiasts, where innovation meets tradition in every cup. Nestled in a warm and contemporary setting, our café celebrates the art of espresso with a diverse range of Nespresso's signature blends and single-origin coffees. Our menu features not only exceptional coffee but also a selection of gourmet pastries and light bites, perfect for pairing with your favorite brew. Whether you're starting your day or taking a break, Nespresso Café provides a refined, yet relaxed atmosphere where each visit is an experience in coffee excellence.



A promotional advertisement for Nespresso Café. It features a close-up of a white cup filled with a latte, topped with a heart-shaped latte art. The cup sits on a white saucer with a silver spoon. In the background, there are coffee beans. The text "Nespresso" is visible in the top right corner. Below it, the price "\$15 Only" is displayed. The words "Coffee HOUSE" are written in a cursive font. At the bottom, it says "Buy a cup of Coffee" and "www.nespresso.com". A small button says "VISIT OUR CAFE NOW".

\$15
Only

Coffee
HOUSE

Buy a cup of Coffee
www.nespresso.com

VISIT OUR CAFE NOW



A promotional advertisement for Nespresso Café. It features a dark green background with a white cup of coffee in the center. Coffee is being poured into the cup from a glass carafe. The text "COME & TRY OUR BEST COFFEE FOR YOUR DAY" is written in white. Below the cup, it says "30% SAVING". At the bottom, it says "Call Us +91 9316721000" and "www.nespresso.com".

**COME & TRY
OUR BEST COFFEE
FOR YOUR DAY**

30% SAVING

Call Us
+91 9316721000

www.nespresso.com

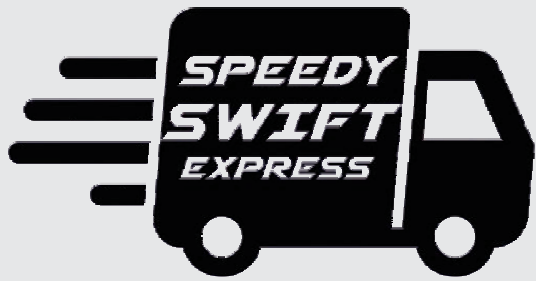


"Brewing brilliance, a cup at a time."

The logo of a Nespresso Cafe combines style and modernity in a fluid way. Its earthy, simple color scheme conveys simplicity and groundedness. Their commitment to the craft of brewing coffee is symbolized by the iconic element of coffee beans. All things considered, the logo perfectly conveys Nespresso Cafe's core as a venue for extraordinary coffee experiences.

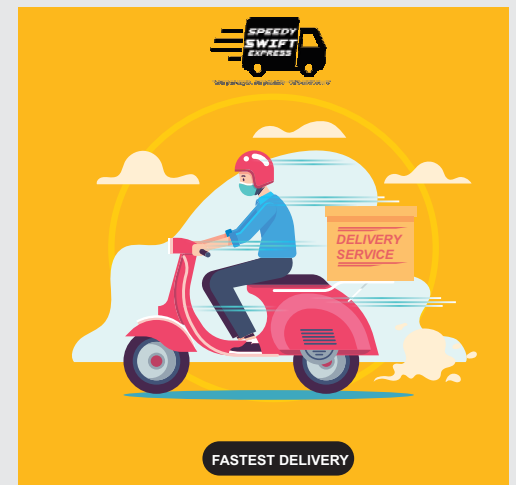
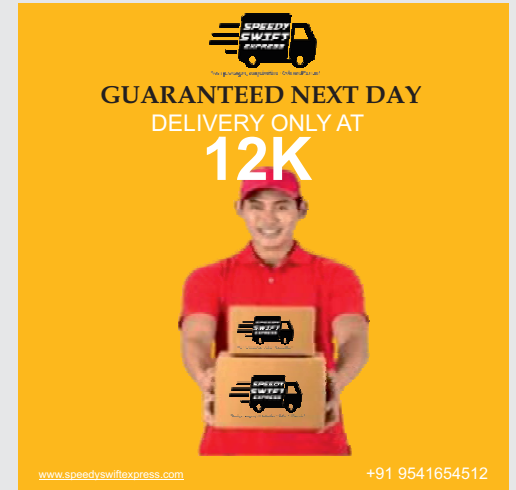
The social media post for Nespresso Café is intended to engage and excite our target demographic. It highlights our most recent items with vivid imagery and enticing writing. The post includes a high-quality image of our signature coffees, emphasizing their rich textures and alluring scents. The message also includes a call to action, inviting people to interact and visit our café.

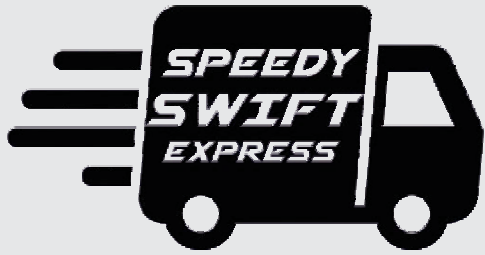




"Your packages , our priorities – Safe and Secure"

Speedy Swift Express Courier Service is a top logistics company dedicated to efficiency and dependability. We specialize in rapid and secure parcel delivery and serve both personal and business clients with dedication to quality. Our vast network ensures that goods are handled with care and arrive at their destinations on time, whether locally or internationally .Customers can follow their deliveries in real time using an easy-to-use tracking system, giving them peace of mind throughout the delivery process. Our educated specialists are committed to providing great service, making Speedy Swift Express a reliable courier partner for all your needs.





"Your packages, our priorities - Safe and Secure"

Our logo for Speedy Swift Express Courier Service embodies speed and efficiency. It features a dynamic design with sleek lines and bold colors that convey movement and urgency. The icon incorporate elements such as a streamlined vehicle, symbolizing rapid delivery and precision. Overall, the logo communicates our core values of speed, efficiency, and professionalism.

The social media post for Speedy Swift Express Courier Service is designed to draw attention and emphasize our dedication to quick, dependable delivery. The visual includes a vivid and appealing image of our delivery vans in action, demonstrating their speed and efficiency. The caption stresses our commitment to providing prompt and dependable service, urging customers to use us for courier services. The message has a clear call to action, directing followers to our website or contacting us for further information. The design is simple and effective, representing our brand's focus on speed and client pleasure.



"Your packages, our priorities - Safe and Secure"

HOME DELIVERY

WITHIN 30 MINUTES



www.speedyswiftexpress.com

+91 2165462165



"Your packages, our priorities - Safe and Secure"

DELIVERY TO YOUR HOME COURIER SERVICE

24 HRS DELIVERY



VISIT US:

www.speedyswiftexpress.com

+91 265489465



Emphasis Matters Advisory Finance Consulting Firm is a leading provider of strategic financial consulting services. We specialize in providing expert guidance on financial management, investment strategy, risk assessment, and business valuation. Their mission is to provide clients with comprehensive analysis and effective recommendations to improve financial performance and drive long-term growth. Their skilled consultants use deep industry knowledge and powerful analytical tools to provide bespoke solutions that fit each client's specific financial difficulties and objectives.



**We are
Financial
Planner
Expert**

Why Choose us:
Comprehensive Services:
From wealth management
and financial planning to tax.

SERVICES:
Insurance
Mutual Funds
Banking

MORE INFO

More information call us
+91 65895545854





Our logo for Emphasis Matters Advisory Finance Consulting Firm is designed to convey professionalism and expertise. The typography is clean and elegant, reflecting our commitment to precision and clarity in financial advisory.

The social media post for Emphasis Matters Advisory Finance Consulting Firm highlights our core services and expertise. It includes a high-quality visual, such as an image of financial charts or a professional team in action, showcasing our commitment to strategic financial solutions. The post also features a call-to-action encouraging potential clients to reach out for personalized consultations or to visit our website for more information. The overall design is polished and professional, aligning with our brand's dedication to excellence in financial consulting.



**Emphasizing
Results,
Driving
Success**



Branding



MENU



"Brewing brilliance, a cup at a time."



COFFEE

Espresso	\$5.00
Double Espresso	\$5.00
Latte	\$5.00
Americano	\$7.00
Macchiato	\$8.00
Flat White	\$9.00
Cappuccino	\$10.00

DRINKS



NON-COFFEE



TEA

Hot Chocolate	\$5.00	Lemon Tea	\$5.00
Milkshake	\$5.00	Mango Tea	\$5.00
Smoothie	\$5.00	Jasmine	\$7.00
Lemonade	\$7.00	Green Tea	\$10.00
Vanilla Milkshake	\$8.00	Mint Tea	\$10.00



DESSERTS

FOOD

Strawberry Waffle	\$5.00	Chocolate Waffle	\$5.00
Cinnamon Roll	\$5.00	Brownies	\$5.00
Lemon Pie	\$5.00	Chessecake	\$7.00
Croissant	\$5.00	Chocolate Muffin	\$10.00







SHAIKH XYZ
(Co-Founder)



+91 565855326



shaikhxyx@gmail.com



www.ema.com

Office Address: 12, CG Road, Ahmedabad

Thanks!!

Looking forward to contact!